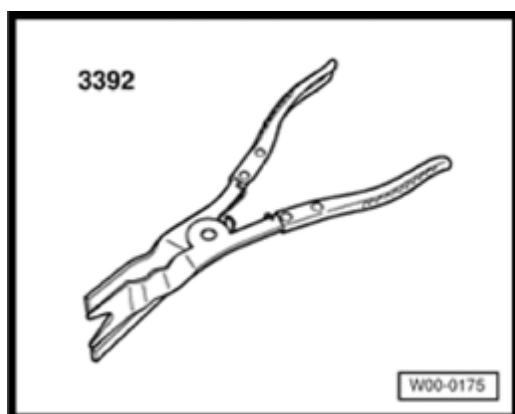


Luggage compartment trim

Tools

Required special tools, workshop equipment, testing and measuring equipment, and aids

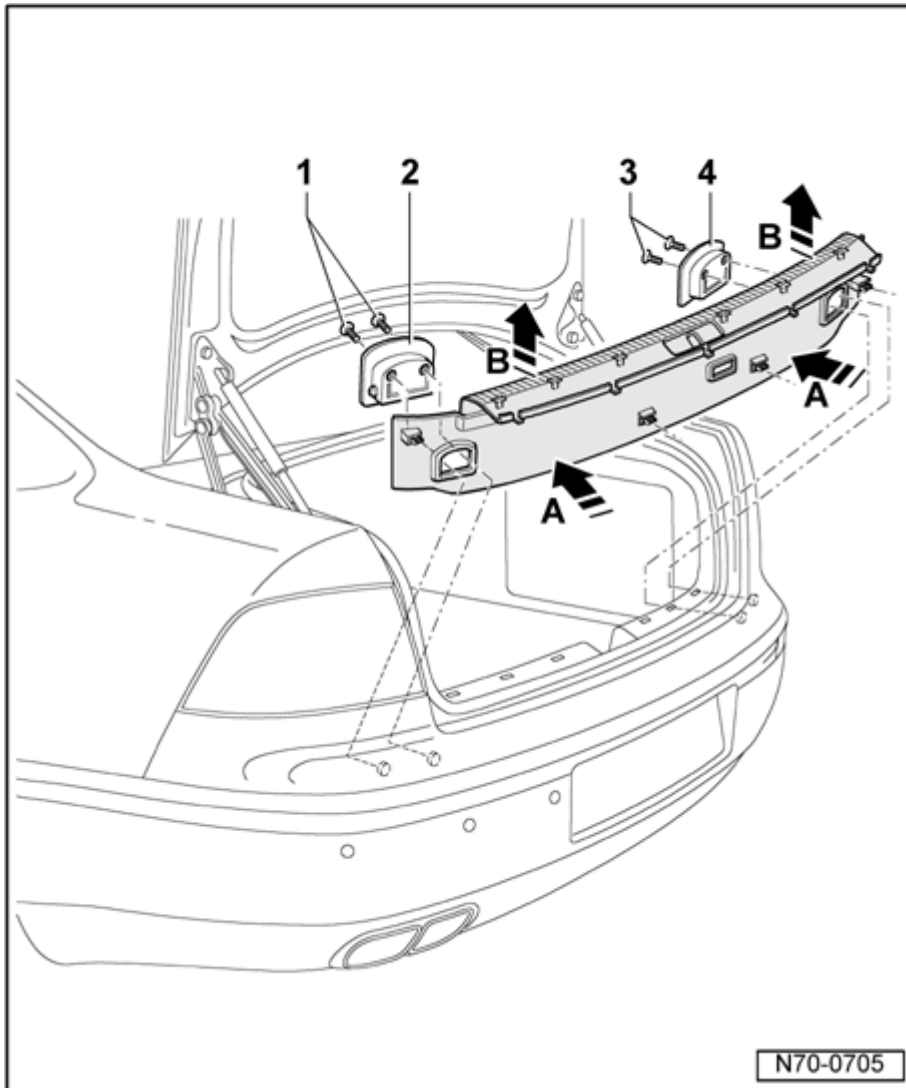


- Pliers 3392

Rear lock carrier cover, removing and installing

Removing

- Switch ignition off.



- Remove the two bolts - **1** - (6 Nm) and remove the anchor point - **2** - .
- Remove the two bolts - **3** - (6 Nm) and remove the anchor point - **4** - .
- Remove the trim from the lower area - **arrows A** - .
- Remove trim upward from the lock carrier - **arrows B** - .
- Separate the wiring harness from the luggage compartment lamp.

Installing

- Installation is performed in the reverse order of removal.

Note:

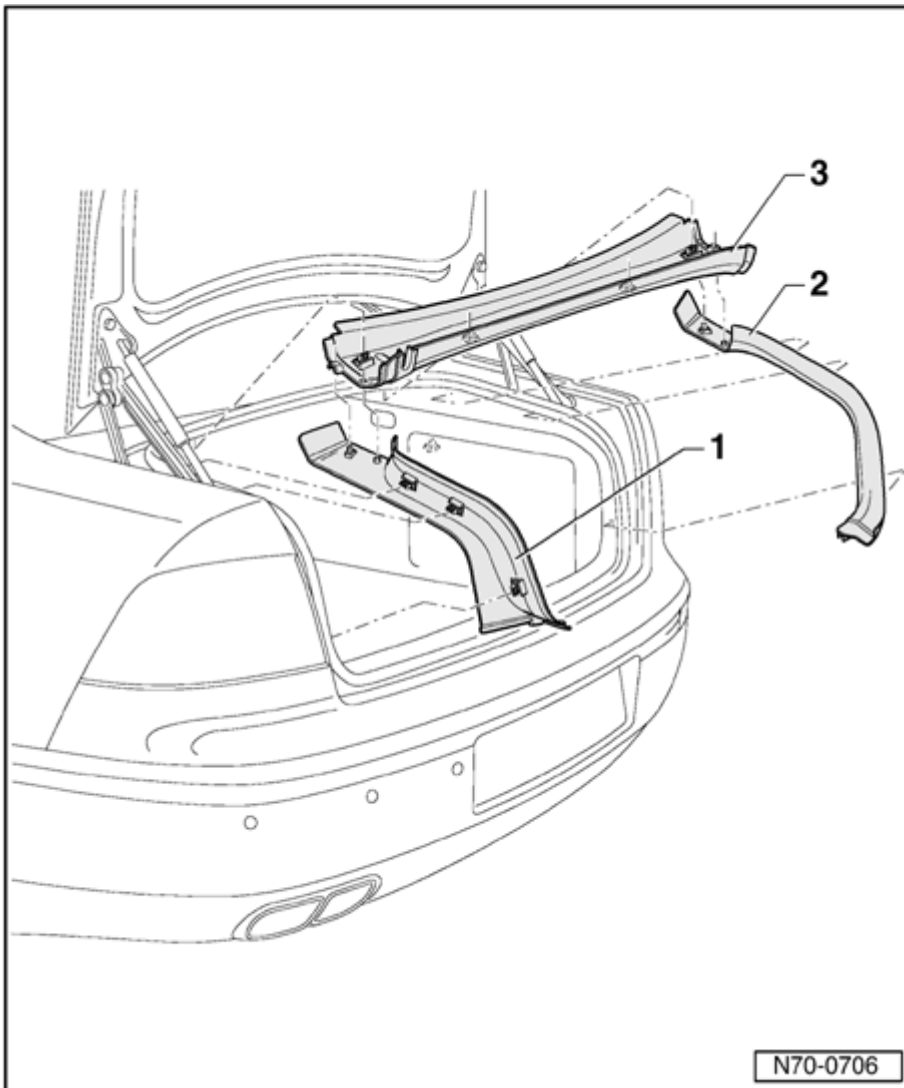
- Before installing, inspect the securing clips for

damage and replace if necessary.

Rain channel trim, removing and installing

Removing

- Remove rear lock carrier trim Page ⇒ [70-5, Rear lock carrier cover, removing and installing](#) .



- Remove side trim - **1** - and - **2** - from the mountings.
- Remove center rain channel trim - **3** - from the mountings.

Installing

- Installation is performed in the reverse order of removal.

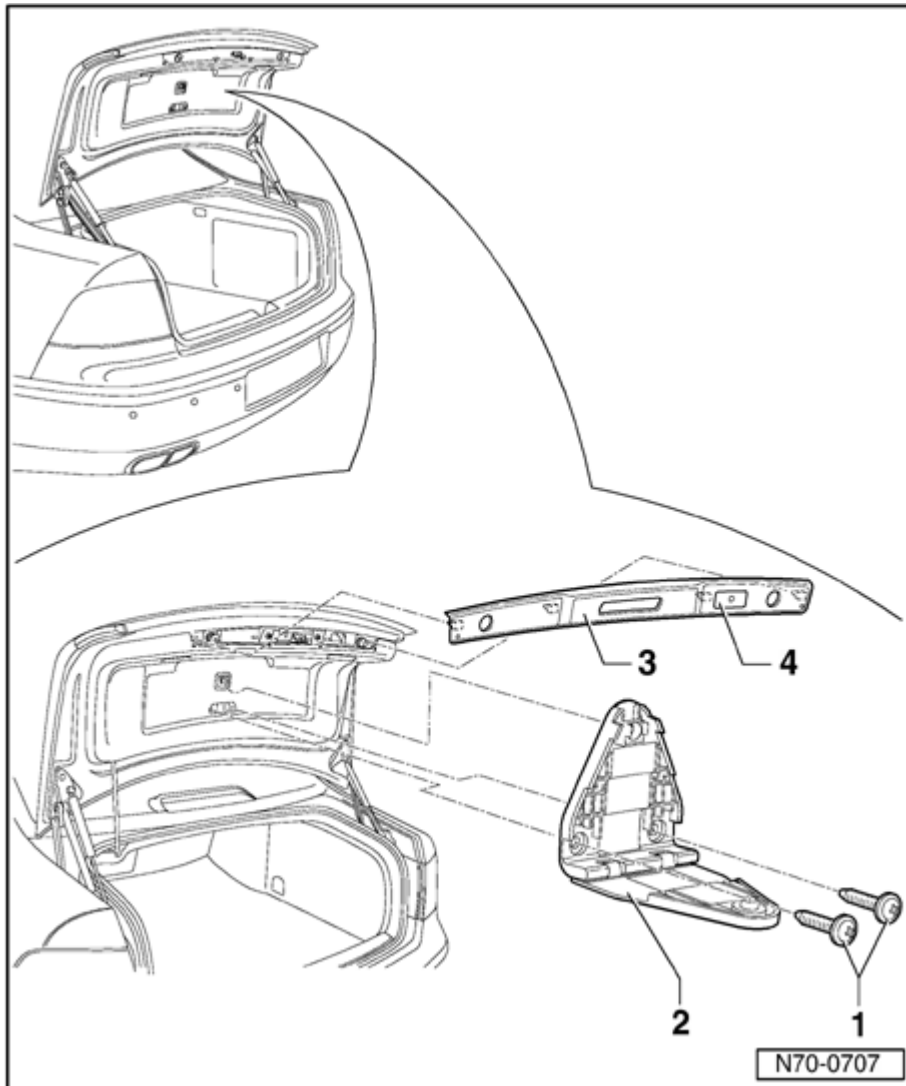
Note:

- *Before installing, inspect the securing clips for damage and replace if necessary.*

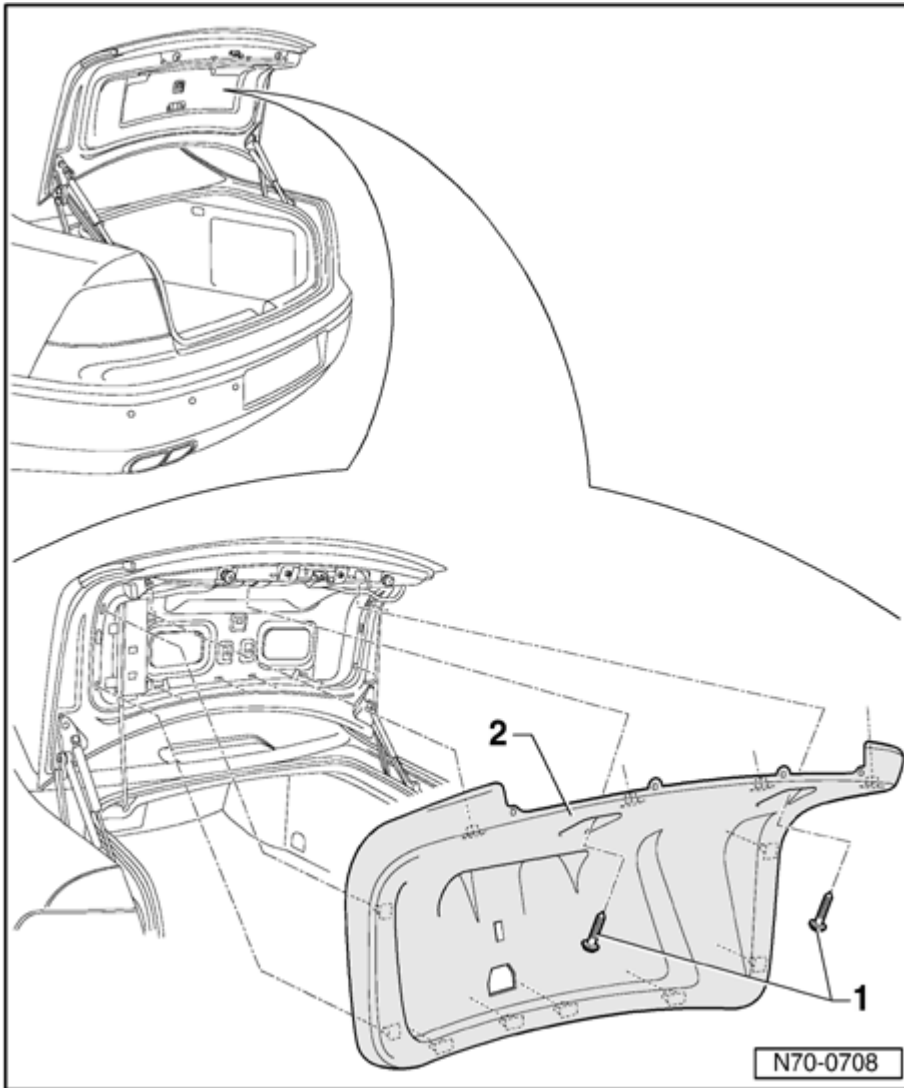
Trunk lid trim, removing and installing

Removing

- Switch ignition off.



- Remove the triangular safety reflector, remove the two bolts - **1** - and remove the bracket - **2** - .
- Using the Pliers 3392 remove the cover strip - **3** - in the area of the securing clips.
- In vehicles with electrical trunk lid actuation, disconnect the connector at the actuation switch - **4** - .



- Remove the two bolts - **1** - in the grip depression (2 Nm).
- Using the Pliers 3392 remove the trim - **2** - in the area of the securing clips.

Installing

- Installation is performed in the reverse order of removal.

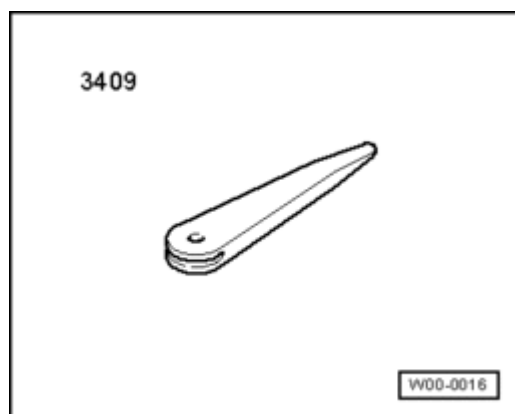
Note:

- *Before installing, inspect the securing clips for damage and replace if necessary.*

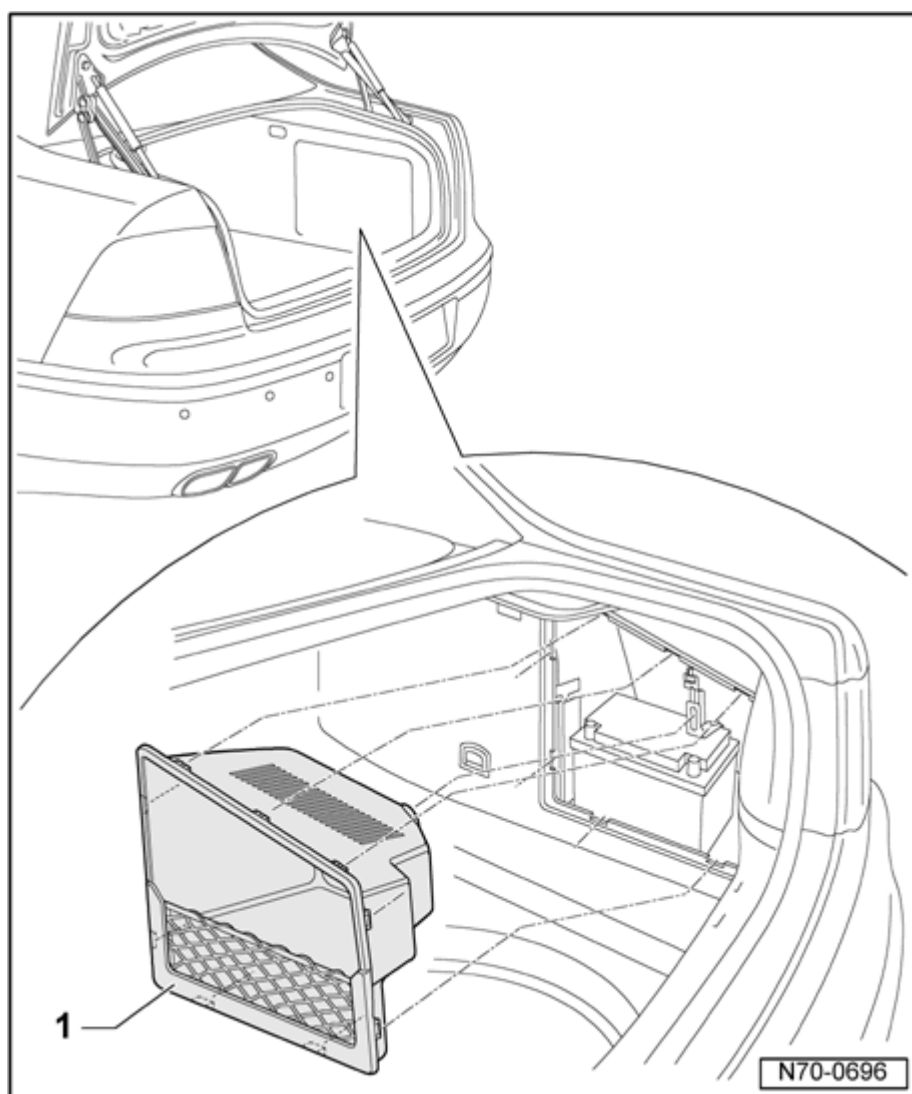
Right storage compartment, removing and installing

Removing

Special tools, testers and auxiliary items required



- Trim removal wedge 3409



- Starting at the top, remove the storage compartment - 1 - from the mountings, in the area of the clips (Qty. 7) using Trim removal wedge 3409 .

Note :

- *To avoid damaging the storage compartment upon removal, it should not be pulled out of the mountings by the netting.*

Installing

- Installation is performed in the reverse order of removal.

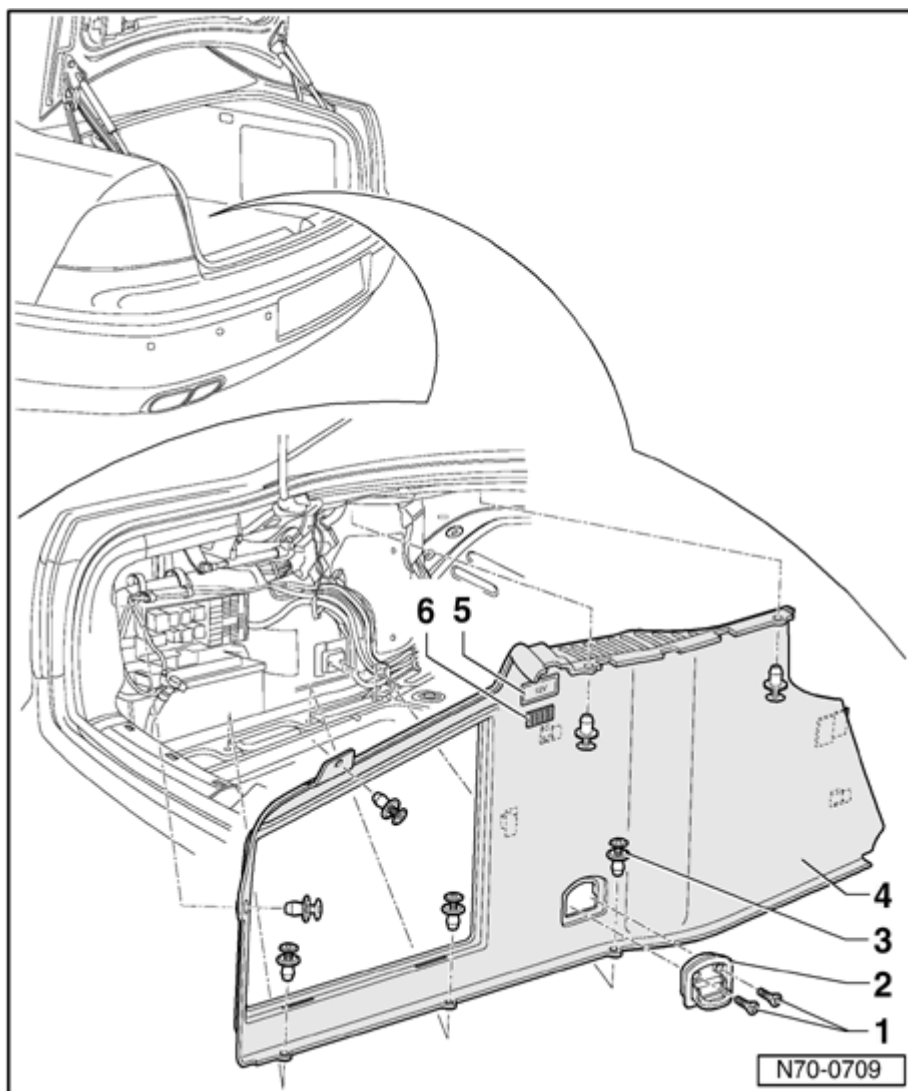
Luggage compartment side trim panels, removing and installing

Note:

- *Removal and installation is described for left-hand side of vehicle. Removal and installation for right-hand side is similar.*

Removing

- Switch ignition off.
- Remove rear lock carrier trim Page ⇒ [70-5, Rear lock carrier cover, removing and installing](#) .
- Remove rain channel trim ⇒ [70-5, Rain channel trim, removing and installing](#) .
- Remove right storage compartment (necessary only for removal of the right luggage compartment trim panel)
Page ⇒ [70-5, Right storage compartment, removing and installing](#) .



- Remove the two bolts - **1** - (6 Nm) and remove the anchor point - **2** - .

- Remove the plugs - **3** - (Qty. 7) and remove the trim panel - **4** - in the area of the clips.

- Separate the wiring harnesses from the outlet - **5** - and luggage compartment lamp - **6** - .

Installing

- Installation is performed in the reverse order of removal.

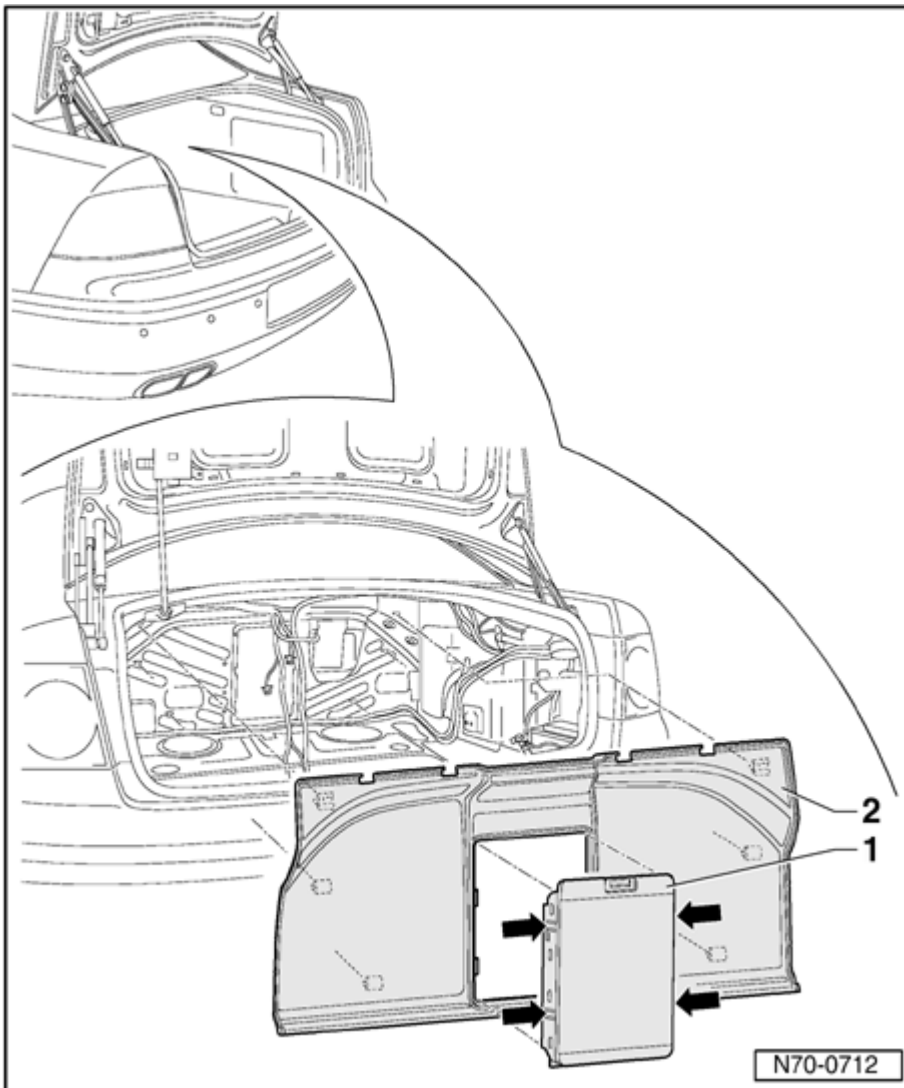
Note:

- *Before installing, inspect the securing clips for damage and replace if necessary.*

Rear bulkhead trim panel, removing and installing

Removing

- Remove rear lock carrier trim Page ⇒ [70-5, Rear lock carrier cover, removing and installing](#) .
- Remove rain channel trim ⇒ [70-5, Rain channel trim, removing and installing](#) .
- Remove right storage compartment Page ⇒ [70-5, Right storage compartment, removing and installing](#) .
- Remove luggage compartment side trim panels ⇒ [70-5, Luggage compartment side trim panels, removing and installing](#) .
- Remove lower portion of rear shelf ⇒ [70-4, Lower rear shelf, removing and installing](#) . ⇒ [70-4, Lower rear shelf, removing and installing](#)



- Press latches - **arrows** - in and remove the ski sack - **1** - .

- Remove the rear bulkhead trim panel -
2 - in the area of the securing clips.

Installing

- Installation is performed in the reverse order of removal.

Note:

- *Before installing, inspect the securing clips for damage and replace if necessary.*